

# MONTAUK

by Mario Ruiz



BARSTOOL ALUMINIUM

062.8201

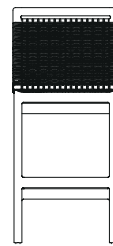
21 1/2" 54.6cm

20" 50.8cm

16 1/2" 41.7cm

16 3/4" 42.8cm

30 3/4" 77.9cm

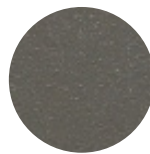


45" 114cm

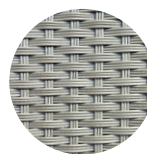
## SPECIFICATIONS

Width:	20"	50.8 cm
Depth:	21 3/4"	55 cm
Height:	45"	114 cm
Seat height:	30 3/4"	77.9 cm
Seat height *with optional cushion:	33"	83.7 cm
COM *for optional cushion:	2 1/2 yds	

## FINISHES



MUSCADE  
-51



BRUNIA  
-22

ALUMINIUM

WEAVE

## MATERIALS

Frame: Powder coated aluminum frame.

Weave: Synthetic all-weather weave.

Cushion foam: Made of HR (high resiliency) foam with Dacron wrap incased in a nonwoven UV stabilized waterproof sonic welded fabric.

Cushion fabric: COM/Outdoor Grade A / Grade B

Fabric options.

Furniture cover available

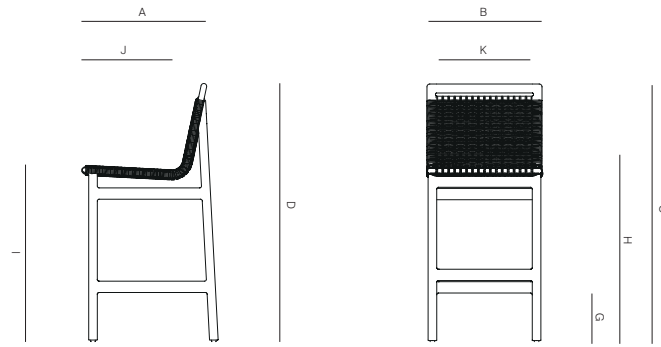
TRHOW PILLOWS SOLD SEPARATELY

# DANAO

danaoliving.com

BARSTOOL ALUMINIUM

062.8201



MEASURES INCH CM	OVERALL WIDTH	OVERALL DEPTH	OVERALL HEIGHT WITH CUSHIONS	OVERALL FRAME HEIGHT	ARM HEIGHT	ARM WIDTH	FOOT HEIGHT	SEAT HEIGHT WITH CUSHIONS	FRAME SEAT HEIGHT (FLOOR TO FRAME)	INSIDE SEAT WIDTH	INSIDE SEAT DEPTH
DESCRIPTION	A	B	C	D	E	F	G	H	I	J	K
BARSTOOL ALUMINIUM	20	21 3/4	45	45	-	-	8 1/2	33	30 3/4	16 3/4	16 1/2
SKU# 062.8201	50.8	55	114	114	-	-	21.7	83.7	77.9	42.8	41.7

MEASURES INCH CM	# OF BACK CUSHIONS	# OF SEAT CUSHIONS	COM YARDS METERS	DIAGONAL CLEARANCE	FURNITURE WEIGHT LBS KGS	TOTAL PIECES IN A BOX	BOXED WEIGHT LBS KGS	CUBE
DESCRIPTION								
BARSTOOL ALUMINIUM	-	-	2 1/2	38	19.95	1	35.71	17.51
SKU# 062.8201	-	-	2.2	96.4	9.05	1	16.2	

TRH OW PILLOWS SOLD SEPARATELY